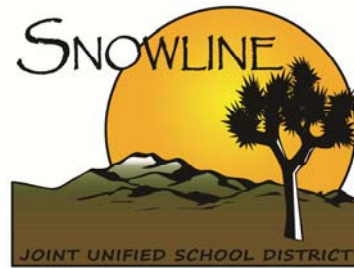


**“Learning for All
Whatever It Takes”**



Parent Connect is a free training provided for parents to help reduce parental stress, minimize child problem behaviors and improve parent-child relations.



Contact Information

Please contact site counselor for more information.

Baldy Mesa 760-868-2500
Jenny Hildenbrandt

Heritage 760-868-2422
Michelle Steinmann

Phelan 760-868-3252
Kimberly Gbordzi

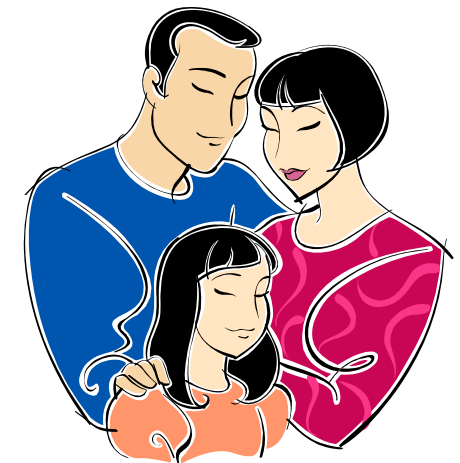
Piñon Hills 760-868-4424
Thomas Power

Vista Verde 760-662-5650
Chris Cate

Wrightwood 760-868-8378
Thomas Power

**Don't miss out on this opportunity.
Take advantage of pre-registration.
Please contact office or come in to
register.**

Parent Connect



**Making a
Connection with
your Kids**

Parent Connect

What is Parent Connect?

Parent Connect is a program that provides positive parenting strategies and techniques to assist parents of elementary school students address a variety of parenting challenges. The program's primary goal is to improve parent-child communication and strengthen families.

Parenting classes will be facilitated by the Elementary School Counselors in Snowline Joint Unified School District. Four of our elementary schools will host Parent Connect Trainings at their sites during the school year. All parents of elementary students in Snowline Joint Unified School District are welcome to attend any and/or all of the trainings. Nine topics will be addressed at each training. Parents will be able to attend up to two sessions in one evening.

Topics

Helping Your Child Deal with His/Her Anger

Consistent Discipline (Part 1 & 2)

Getting Your Child to Listen the First Time

Connecting with Your Child through Listening

Proven Strategies for Reducing Sibling Hassles

Relief for Homework Headaches

Stop Back-talking & Whining Now

Stop the Cycle of Bullying

Helping Your Child Cope with Divorce/Separation



Dates and Locations of 2010-2011 Trainings

November 16th Baldy Mesa Elementary

10376 Baldy Mesa Rd, Phelan, CA

January 13th Vista Verde Elementary

13403 Vista Verde St, Victorville, CA

February 24th Phelan Elementary

4167 Phelan Rd, Phelan, CA

March 10th Heritage Elementary

9542 Wilson Ranch Rd, Phelan, CA

Parent Connect Time Schedule

6:00 - 6:05 Opening words and introductions

6:05 - 6:20 Importance of Education by Luke Ontiveros

6:20 - 6:50 1st session

6:50 - 7:00 break

7:00 - 7:30 2nd session

7:30 - 8:00 Additional Discussion and questions

Free Childcare will be provided